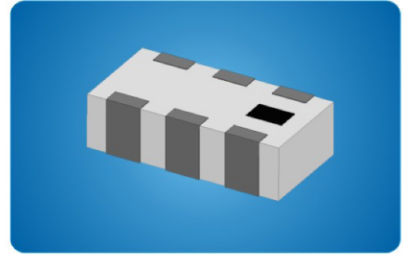


HFCN1系列高通滤波器

★ 特征与用途 FEATURES AND APPLICATIONS

- 体积小，适合高密度贴装
- 无源集成多层LTCC工艺
- 低插损损耗
- 符合ZZR-Q/XEC 20073-2015及企业详细规范



★ 产品型号 PRODUCT IDENTIFICATION

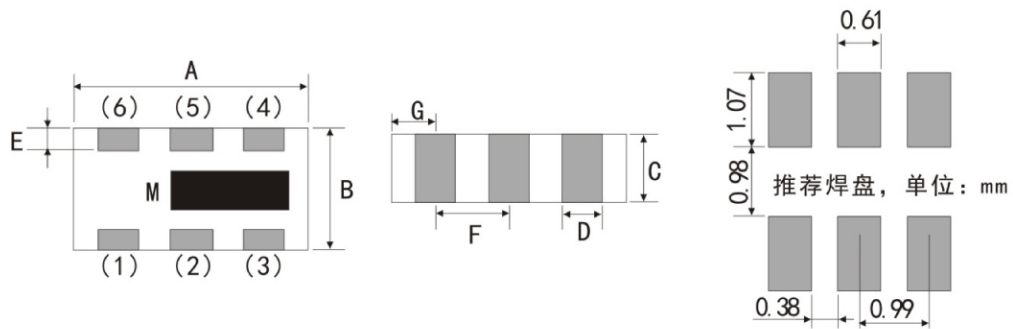
HFCN1 3216 — 3800

① — ② — ③

- ① 高通滤波器
- ② 外形尺寸：长×宽
- ③ 截止频率（MHz）：3800—代表3800MHz

★ 外观尺寸 SHAPE AND DIMENSIONS

HFCN1产品外形结构图



注：(1)输入；(2)、(4)、(5)、(6)接地端；(3)输出；M：用于区分输入输出端及正反方向

单位：mm

型号	外形尺寸						
	A	B	C	D	E	F	D
HFCN1-3216	3.2±0.2	1.6±0.2	0.89±0.2	0.56±0.15	0.28±0.15	0.99±0.15	0.61±0.15

★ 规格特性

SPECIFICATIONS

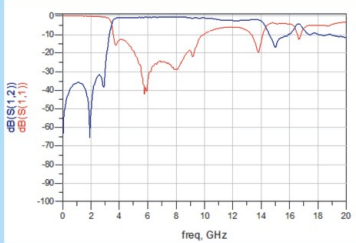
● HFCN1-3216 TYPE

型 号	截止频率 f_c (MHz)	插入损耗		电压驻波比		阻带损耗	
	插入损耗=3dB	通带频率 (MHz)	标准值 (dB) Max	测试频率 (MHz)	标准值 (: 1) Max	测试频率 (MHz)	标准值 (dB) Max
HFCN1-3216-3500	$3350 \leq f_c \leq 3550$	4000 - 8800	1.5	6000	1.5	2900	30
						2800	20
HFCN1-3216-3800	$3650 \leq f_c \leq 3950$	4500 - 9000	1.5	6000	1.5	2300	30
						3200	20
HFCN1-3216-4400	$4200 \leq f_c \leq 4500$	5000 - 9900	1.5	6000	1.5	3600	30
						3500	20
HFCN1-3216-4600	$4300 \leq f_c \leq 4600$	5200 - 10500	1.5	7500	1.5	2700	30
						3800	20
HFCN1-3216-5050	$4780 \leq f_c \leq 5080$	5650 - 9700	1.5	7000	1.5	3600	30
						4200	20
HFCN1-3216-5500	$4800 \leq f_c \leq 5800$	6600 - 10000	1.5	6600	1.5	3400	30
						4500	20
HFCN1-3216-8400	$8100 \leq f_c \leq 8500$	9500 - 13000	1.5	9000	1.5	5700	30
						6000	20

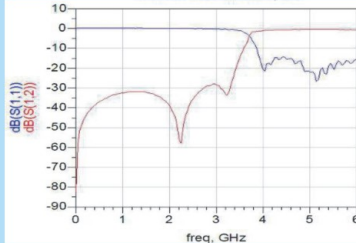
★ 电气特性

TYPICAL ELECTRICAL CHARACTERISTICS

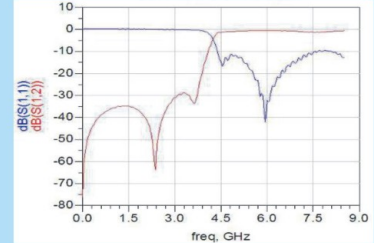
● HFCN1-3216-3500



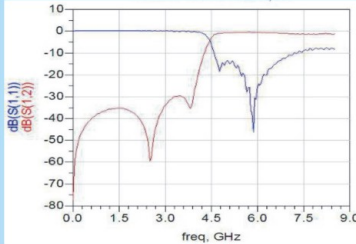
● HFCN1-3216-3800



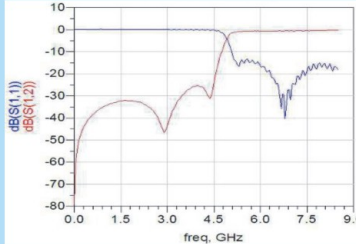
● HFCN1-3216-4400



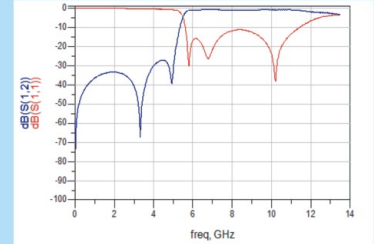
● HFCN1-3216-4600



● HFCN1-3216-5050



● HFCN1-3216-5500



● HFCN1-3216-8400

